



How to become a Lineworker

Lineworkers are vital for transporting electricity from generation sources to homes and businesses.

This document shares a small amount of basic knowledge in the lineworker field. Its purpose is to let people know it's an available avenue in their future professional careers.

For more information, please visit the Dept. of Workforce Development website through this QR code or talk to a local professional at Sun Prairie Utilities - call (608) 837 - 5500.



What's it like to be a lineworker?

The lineworkers at Sun Prairie Utilities construct and maintain the municipal electric distribution system in the City of Sun Prairie. At times, they need to work high in the air on utility poles or deep in the dirt to do so.

The job can be challenging and physically demanding. It comes with both risks and rewards.

Lineworkers are compensated well and can experience working as a team in a rewarding field.

Additionally, lineworkers focus on working safely under the inherent dangers of electricity during extreme weather and field conditions.

Lineworkers could be called at any hour to restore power after accidents or severe weather. These special calls can require long hours of overtime, even on the weekends. They take pride in their craft and work hard to provide electricity to their communities.

How much \$\$ does a lineworker make?

Although varying by municipality, the median competitive annual salary for a Sun Prairie Utilities electric lineworker in 2026 is **\$117,645**.



What do Sun Prairie Utilities' lineworkers do?

A lineworker's job changes daily. Work locations and tasks can change due to the weather, emergencies, or time-sensitive projects. Some of the functions include:

- Install, remove, maintain, and repair overhead distribution lines, underground electrical distribution systems, insulators, transformers, and other equipment.
- Operate and maintain job-related equipment, including, but not limited to, bucket trucks, trenchers, cranes, compressors, and fault finders.
- Perform troubleshooting, power restoration, and damage reparation tasks when necessary in a safe, reliable, and time-efficient manner.
- Follow OSHA requirements and utility standards.
- Communicate technical information.
- Construct substations.
- Administer limited office duties with daily assignments and accurately utilize work orders.

How can you become a lineworker?

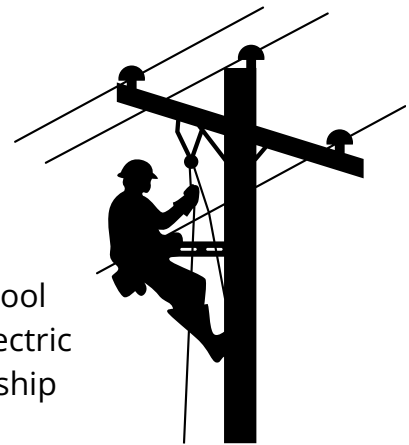
There are several ways to become a lineworker. Two distinct routes include advancement opportunities at a utility or enrolling in the nine-month Power Distribution program.

If you choose to advance through a utility, the first step is to apply for an entry-level position (e.g., Grounds Maintenance). Explain to your employer that you want to become a lineworker and are willing to learn when the opportunity arises. As positions shift, you can work toward becoming a lineworker apprentice and be sponsored by your utility.

The most common path to becoming a lineworker apprentice is taking the nine-month Power Distribution program. You can find this program at several colleges in Wisconsin, including:

- Blackhawk Technical College, *Janesville*
- Chippewa Valley Technical College, *Eau Claire*
- Moraine Park Technical College's *Beaver Dam Campus*
- Southwest Wisconsin Technical College, *Fennimore*
- Northeast Wisconsin Technical College, *Green Bay*

To help fund the certification program, Sun Prairie High School students are encouraged to apply for both the Municipal Electric Utilities of WI scholarship and the SPU WPPI Energy scholarship during their senior year.



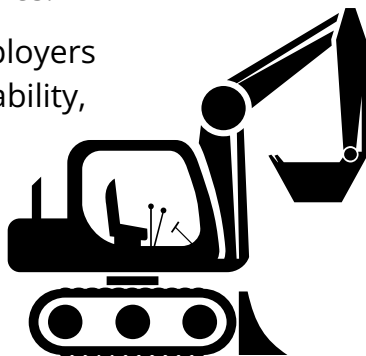
Apprentices throughout the state must attend 640 hours of in-class training (four weeks per year) and receive approximately 7,360 hours of on-the-job training at their respective utilities. It takes four years for lineworker apprentices to graduate and become journey-level electric lineworkers.

What do you need for the job?

Employers are looking for both women and men who have these during a journey lineworker interview:

- Valid WI driver's license - class A.
- High school diploma or GED and completion of the nine-month Power Distribution program or the equivalent combination of education and experience.
- Knowledge of First Aid and CPR.
- Journey Lineworker Certification.
- Able to comprehend and follow written instructions, maps, and diagrams related to electrical distribution and transmission systems.
- Able to analyze technical procedures, perform utility-related calculations, and showcase critical thinking.
- Willing to work at various heights in all weather conditions and climb utility poles.
- Be safety conscious and knowledgeable of job hazards.
- Knowledge of electrical theory, the 69kV transmission, and 12kV distribution lines.

**Note:* Some employers test for physical ability, such as balance, coordination, strength, and mechanical aptitude.



CONTACT US

(608) 837 - 5500

Information@myspu.org

Visit our website



510 Linnerud Dr.
Sun Prairie, WI 53590